

PARTS CATALOG

Fiat Hesston 70-65 Crawler Tractor

Print No. 6031430400
1/2014



NEW HOLLAND

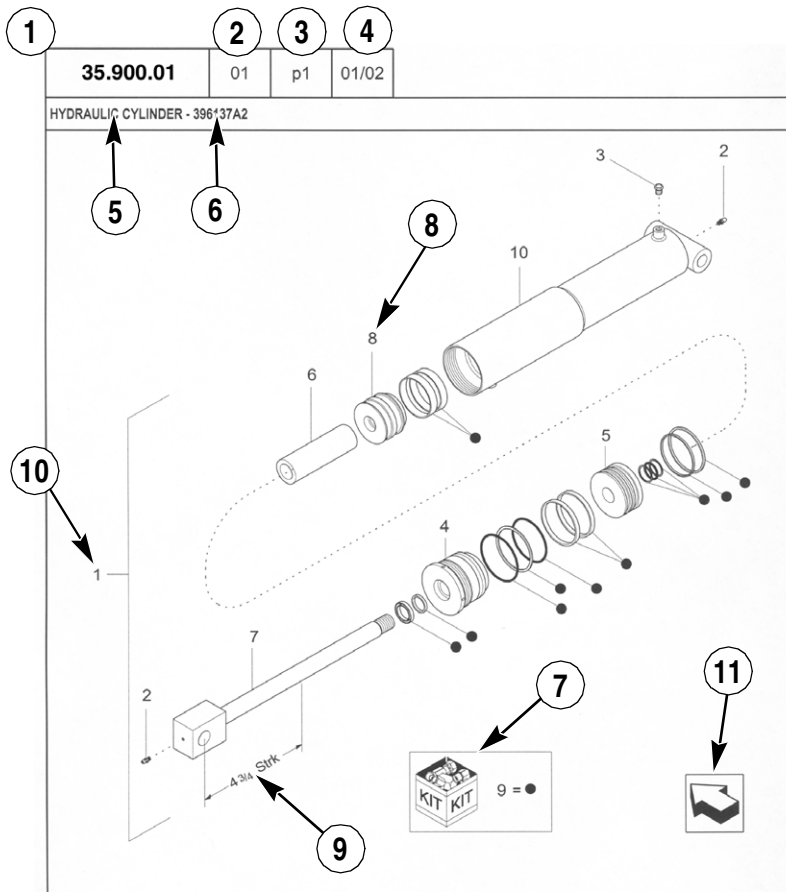
AGRICULTURE

GENERAL INFORMATION

1. Whenever the terms left and right are used, it should be understood to mean from a position facing in direction of travel.
2. Throughout this manual you may find common hardware not illustrated, but listed in the description column. The service part immediately preceding a hardware listing is the part using these particular items for mounting purposes. This hardware is not included with the service part or assembly when ordered as a replacement.
3. The illustrations show typical assemblies plus individual parts but in all cases may not show the exact shape or detail of parts required. However, the purpose for the illustrations is to identify parts performing like functions. Whenever possible illustrations are located at the beginning of each section or immediately adjacent to the applicable text.
4. CNH America LLC is continually striving to improve its products. We must, therefore, reserve the right to make improvements or changes when it becomes practical and possible to do so, without incurring any obligation to make changes or additions to the equipment sold previously.

CNH America LLC, Racine, WI 53404 U.S.A.

How to Use Your Parts Catalog



HYDRAULIC CYLINDER - 396137A2					
REF	FN	PART NUMBER	YR/SN	QTY	DESCRIPTION
1	1	396137A2	BTW 01/85 & 02/02	1	CYLINDER ASSY. 4-3/4 in strk, Inc 2-10
2		31-95	Before 01/85	2	FITTING
2		219-8	From 01/85	2	NIPPLE, LUBE Grease, 1/4 tpr x 17/32
3		{402475A2}		1	BREATHER
4		402474A1		1	CAP CYLINDER END
5		402468A1	BSN JJC0189200	1	PISTON ROD/GLAND
5		145221C3	ASN JJC0189200	1	PISTON
6		402471A1		1	SPACER
7		402473A1		1	ROD, PISTON
8		402469A1		1	PISTON ROD/GLAND
9		402476A1		1	PACKAGE, SEALS
10		NSS		1	NOT SERVICED SEPARAT CASE ASSEMBLY
(1) 08-20					
STANDARD			MODELS		

How to Use Your Parts Catalog

1. Figure Number
2. Sequence code within the Figure Number
3. Page number within the Sequence Code
4. Date of Printing (month / year)
5. Figure Description
6. General information regarding the figure
7. Parts supplied in repair kits per symbol reference
8. Figure call-out of the part number (REF)
9. Technical Specifications relating to the part indicated
10. Figure call-out includes bracketed items, the included items may also be listed in the additional description area
11. Orientation - Arrow indicates front of the machine
12. Footnote - Additional information relating to the part number. In this example, 08-20 equals another figure that this part is shown on.
13. Part Number
 - NSS = Non-serviced parts
 - Bracketed numbers = not available as service parts in this market
14. Not Available as service part in this market
15. YR/SN
 - Year
 - Before 01/85 = Part valid for production January 1985 and before
 - From 01/85 = Part valid for production from January 1985 and after
 - BTW 01/85 & 02/02 = Part valid for machines produced between January 1985 and February 2002.
 - Serial Number (P.I.N.)
 - BSN JJC0268800 = Part valid for serial number JJC0268800 and below
 - ASN JJC0268800 = Part valid for serial number JJC0268800 and above
 - BTW JJC0178000 & JJC0179000 = Part valid for serial numbers between JJC0178000 & JJC0179000
16. Total Quantity of the Part referred to in the page. The quantity can be replaced by the following indications:
 - AR = quantity as required
 - X = as required
17. Part Description
18. Additional description of the part to help confirm identification
19. Figure Notes
20. Model Number(s)

Explanation of Abbreviations

Abbreviation	Meaning
adj	adjustable
amp	ampere
AR	As required
ASN	Serial number and after / P.I.N. and after
barb	barb
blkhd	bulkhead
boss	boss
BSN	before serial number / before P.I.N
BTW	between
cc	cubic centimetre
chain	chain
cl	class
cp pt	cup point
CRS	Chrome Alloy Steel
CST	Carbon Steel
cu yd	cubic yard
deg	degree
dia	diameter
dr type	drive type
dry	dry
fc	face
fc sl	face seal
fem	female
fem PT	female pipe thread
fl	flare
ft	feet (or foot)
gal	gallon(s)
gr	grade
hd	head
hp	horsepower
ID	inside diameter

Abbreviation	Meaning
in	inch(es)
Inc.	includes
inv fl	inverted flare
K	kilo
kg	kilogram
L	litre
lb	pound(s)
lg	long
LH	left hand
LH thd	left hand thread
links	links
M	(prefix) metric thread size
m	metre
male	male
mm	millimetre
NF	National Fine
No.	number
NS	National Super Fine
OD	outside diameter
ohm	electrical unit of resistance
Or	O-ring
orifice	orifice
P	pitch
piece	piece
psi	pounds per square inch
PT	pipe thread
rd	round
rd holes	round holes
RH	right hand
RH thd	right hand thread
rpm	revolutions per minute

Explanation of Abbreviations

Abbreviation	Meaning
sl	self locking
slat	slat
spool	spool
sq	square
SST	Stainless Steel
st	self tapping
stem	stem
strk	stroke
sw	swivel
T	teeth
Teflon	Teflon
thin	thin
thk	thick
tpr	taper

Abbreviation	Meaning
tube	tube
type	type
V	volt(s)
W	watt(s)
way	way
wide	wide
X	as required
yd	yard

Dimensions

Metric and U.S. hardware dimensions do not show the numeric designations of standard coarse threads. A number following a semi colon (;) is the class or grade of hardware. A comma (,) represents the decimal point (.) used in U.S. dimensions.



TABLE OF CONTENTS

05.100.03		FILTER & CAPACITIES, 70-65
0.02.1		ENGINE
0.04.0		CRANKCASE AND CYLINDERS
0.04.2		OIL SUMP
0.04.3	1	ENGINE COVERS & GASKETS
0.04.3	2	ENGINE COVERS & GASKETS
0.04.5		ENGINE BREATHERS
0.06.0	1	CYLINDER HEAD
0.06.0	2	CYLINDER HEAD
0.07.1		INTAKE MANIFOLD
0.07.6		EXHAUST MANIFOLD
0.08.0		CRANKSHAFT
0.08.1		CONNECTING ROD
0.08.2		PISTONS
0.08.3		FLYWHEEL
0.08.4		DAMPER
0.10.0		DRIVE GEARING
0.10.5		DYNAMIC BALANCER, GEARS & SHAFTS
0.12.0		DRIVE-GEARING - TAPPETS AND PUSHRODS
0.14.0	1	INJECTION PUMP
0.14.0	2	INJECTION PUMP
0.14.0	3	INJECTOR
0.14.0/ A	1	INJECTION PUMP 4794589 (BOSCH)
0.14.0/ A	2	INJECTION PUMP 4794589 (BOSCH)
0.14.0/ A	3	INJECTION PUMP 4794589 (BOSCH)
0.14.0/ B	1	INJECTION PUMP 4797416 (C.A.V.)
0.14.0/ B	2	INJECTION PUMP 4797416(C.A.V.)
0.14.0/ B	3	INJECTION PUMP 4797416(C.A.V.)
0.14.0/ C		INJECTION PUMP - NOZZLE HOLDER - 4802392 (ALTECNA)
0.14.0/ D		INJECTION PUMP - NOZZLE-HOLDER - 4791124 (BOSCH)
0.14.0/ E		INJECTION PUMP - NOZZLE HOLDER - 4796644 (OMAP)
0.14.0/ F		INJECTOR - 4816070 (C.A.V.)
0.14.0/ 1B	1	INJECTION PUMP 4817262 (C.A.V.)
0.14.0/ 1B	2	INJECTION PUMP 4817262 (C.A.V.)

TABLE OF CONTENTS

0.14.0/ 1B	3	INJECTION PUMP 4817262 (C.A.V.)
0.14.9		LINES
0.20.0		FUEL FILTER
0.20.0/ A		FUEL FILTER 4659288
0.20.1		FUEL PUMP
0.20.1/ A		FUEL PUMP 4757883 (CORONA)
0.20.3		FUEL LINES (BOSCH)
0.20.3/ 1		FUEL LINES (C.A.V.)
0.20.3/ 1A		FUEL LINES (C.A.V.)
0.27.0		LINES AND OIL LEVEL INDICATOR
0.30.0		OIL PUMP
0.30.0/ A		OIL PUMP 4705827
0.30.2		OIL FILTER
0.30.5		LINES AND OIL LEVEL INDICATOR
0.32.0		WATER PUMP
0.32.0/ A		WATER PUMP 4784454 C3049 4813370 D3049
0.32.3		ENGINE COOLING LINES
0.32.6		TEMPERATURE CONTROL (THERMOSTAT)
0.34.7		FAN
0.35.0		BELT PULLEY DRIVE & COVER
0.36.0		STARTER MOTOR
0.36.0/ A		STARTER MOTOR 4755109 JF 12V-BKV (BOSCH)
0.36.0/ B		STARTER MOTOR 4737755 NT68AC (MARELLI)
0.36.0/ C		STARTER MOTOR 4832942 (ISKRA)
0.36.0/ 1B		STARTER MOTOR 4807375 (MARELLI)
0.40.0		ALTERNATOR
0.40.0/ A		ALTERNATOR 4766127 (ISKRA)
0.40.0/ B		ALTERNATOR 4762563 (LUCAS)
0.40.0/ C		ALTERNATOR 5101645 (MARELLI)
0.40.0/ D		ALTERNATOR 4998353 (BOSCH)
0.42.0		TACHOMETER DRIVE
1.04.0		FUEL TANK
1.04.2		ADDITIONAL FUEL TANK
1.04.6		FUEL LINES

TABLE OF CONTENTS

1.10.1		ACCELERATOR CONTROL LINKAGE
1.15.1		SILENCER (MUFFLER)
1.17.0		RADIATOR
1.17.2		RADIATOR HOSES
1.17.5		RADIATOR PROTECTIVE SEALS
1.17.6		RADIATOR FAN SHROUD
1.19.4		AIR CLEANER (MOTOFIDES)
1.19.4/ A		AIR CLEANER - 8323083
1.19.5		PRECLEANER
1.19.5/ A		PRECLEANER 4997662
1.19.7		AIR CLEANER PIPING
1.21.0	1	TRACTOR BODY
1.21.0	2	TRACTOR BODY
1.21.1		SUPPORT
1.25.0	1	CLUTCH
1.25.0	2	CLUTCH
1.25.0	3	CLUTCH
1.25.0	4	CLUTCH
1.25.3		P.T.O. ENGAGEMENT CLUTCH
1.26.0		CLUTCH CONTROL
1.26.2	1	LEVERS AND TIE ROD
1.26.2	2	LEVERS AND TIE ROD
1.26.5	1	P.T.O. CONTROL
1.26.5	2	P.T.O. CONTROL
1.26.5	3	P.T.O. CONTROL
1.28.1	1	TRANSMISSION GEARS
1.28.1	2	TRANSMISSION GEARS
1.29.0		INTERIOR CONTROL
1.29.1		EXTERNAL CONTROL
1.30.5		MULTIMETER DRIVE
1.32.0		CASINGS, COVERS AND SUPPORTS
1.32.1		CENTRAL REDUCTION GEARS
1.37.0		TRANSMISSION BRAKE
1.37.2		LEVERS AND TIE ROD

TABLE OF CONTENTS

1.39.2	1	GEAR SHIFT CONTROL
1.39.2	2	GEAR SHIFT CONTROL
1.37.3		BRAKE FOOT CONTROL
1.37.4		BRAKE HAND CONTROL
1.39.0		COUPLING CLUTCH
1.39.0/ 1		COUPLING CLUTCH
1.48.0		SIDE REDUCTION UNIT (FINAL DRIVE) HOUSING AND COVERS
1.48.0/ 1		SIDE REDUCTION UNIT (FINAL DRIVE) HOUSING AND COVERS
1.48.1		FINAL DRIVE, GEARS AND SHAFTS
1.56.5		REAR SUPPORT
1.56.5/ 1		REAR SUPPORT
1.74.1		BATTERY MOUNTING
1.74.2		BATTERY
1.75.0		ELECTRIC CONTROLS
1.75.1		INSTRUMENT CLUSTER
1.75.3		STARTING CABLES
1.75.4		AUXILIARY CABLES
1.75.6		LIGHTING COMPONENTS
1.75.6/ A		LIGHTING COMPONENTS - 5120073 (ELMA)
1.75.6/ B		LIGHTING COMPONENTS - 5122379 (SIEM)
1.75.6/ C		LIGHTING COMPONENTS - 5117792 (COBO)
1.75.6/ D		LIGHTING COMPONENTS - 5132519 (COBO)
1.75.6/ E		TAIL LAMP DIRECTION PARKING AND STOP 5107086
1.75.6/ F		LIGHTING COMPONENTS 5141169 (CARELLO)
1.75.6/ G		LIGHTING COMPONENTS 5138349 (SATURNUS)
1.76.5		REAR SPOT LAMP APPLICATION
1.76.5/ A		REAR SPOT LAMP APPLICATION 4999738 (OLSA)
1.76.5/ B		REAR SPOT LAMP APPLICATION 5117692 (COBO)
1.56.0		SPRING AND PIN SUSPENSION
1.56.0/ 1		SPRING AND PIN SUSPENSION
1.56.1		FRONT SUPPORT
1.56.3		CROSSMEMBERS
1.56.3/1		CROSSMEMBERS
1.80.1		POWER TAKE-OFF

TABLE OF CONTENTS

1.80.2		PTO CONTROL
1.82.0		LIFTER CASES AND COVERS
1.82.1	1	HYDRAULIC LIFTER LINES
1.82.1	2	HYDRAULIC LIFTER LINES
1.82.3		HYDRAULIC PUMP
1.82.4		LIFTER DISTRIBUTOR AND VALVES
1.82.5	1	LIFT CONTROL
1.82.5	2	LIFT CONTROL
1.82.6		CYLINDERS AND PISTONS
1.82.8		SHAFT AND IDLER UNIT
1.83.0	1	HOOD
1.83.0	2	HOOD
1.89.0		DRAWBAR
1.89.0/ 1		DRAWBAR
1.89.2		TOWING DEVICE
1.89.6	1	IMPLEMENT CARRIER
1.89.6	2	IMPLEMENT CARRIER
1.84.2		INSTRUMENT PANEL
1.85.0		SEAT
1.85.0/ A	1	SEAT (GRAMMER)
1.85.0/ A	2	SEAT (GRAMMER)
1.85.0/ B	1	SEAT 5140884
1.85.0/ B	2	SEAT 5140884
1.87.0		FENDERS (MUDGUARDS), FOOTBOARDS & HANDRAILS
1.90.5		TOOL BOX
1.98.0		LICENSE PLATE
1.98.2		MODEL IDENTIFICATION DECALS AND PLATES
1.99.2		TOOLS
1.50.0		DRIVE SPROCKET
1.50.1	1	TRACK ROLLERS
1.50.1	2	TRACK ROLLERS
1.50.2	1	IDLER WHEEL
1.50.2	2	IDLER WHEEL
1.50.3		TRACK ASSY

TABLE OF CONTENTS

1.50.3/ 1		TRACK ASSY
1.50.5		TRACK GUARDS
1.50.7	1	CARRIER ROLLER TRACKS
1.50.7	2	TRACK CARRIER ROLLER
054		HESSTON VERSION
110	1	MECANIC REVERSER
110	2	MECANIC REVERSER
111	01	ADDITIONAL REDUCTION GEAR
111	02	ADDITIONAL REDUCTION GEAR
130		FUEL FILTER
150	1	HORIZONTAL MUFFLER
150	2	HORIZONTAL MUFFLER
190		AIR CLEANER, DRY
199	01	SELF-CLEANING FILTER - 5146989 (DONALDSON)
199	02	SELF-CLEANING FILTER
203		THERMOSTARTER AUXILIARY DEVICE
225		FRONT SUPPORT BALLAST
339	1	TWO S-D ACTING DISTRIB. AND ONE DISTRIB. WITH FLOAT (KONTAK)
339	2	TWO S-D ACTING DISTRIB. AND ONE DISTRIB. WITH FLOAT (KONTAK)
339	3	TWO S-D ACTING DISTRIB AND ONE DISTRIB. WITH FLOAT (KONTAK)
339	4	TWO S-D ACTING DISTRIB. AND ONE DISTRIB. WITH FLOAT (KONTAK)
339	5	TWO S-D ACTING DISTRIB. AND ONE DISTRIB. WITH FLOAT (KONTAK)
339	6	TWO S-D ACTING DISTRIB. AND ONE DISTRIB. WITH FLOAT (KONTAK)
339	7	TWO S-D ACTING DISTRIB. AND ONE DISTRIB. WITH FLOAT (KONTAK)
366	1	SIMPLE DOUBLE-EFFECT DISTRIBUTOR (KONTAK)
366	2	SIMPLE DOUBLE-EFFECT DISTRIBUTOR (KONTAK)
366	3	SIMPLE DOUBLE-EFFECT DISTRIBUTOR (KONTAK)
366	4	SIMPLE DOUBLE-EFFECT DISTRIBUTOR (KONTAK)
367	1	THEREE SIMPLE DOUBLE-EFFECT DISTRIBUTOR (K.)
367	2	THEREE SIMPLE DOUBLE-EFFECT DISTRIBUTOR (K.)
367	3	THEREE SIMPLE DOUBLE EFFECT DISTRIBUTOR (K.)

TABLE OF CONTENTS

367	4	THEREE SIMPLE DOUBLE-EFFECT DISTRIBUTOR (K.)
367	5	THEREE SIMPLE DOUBLE-EFFECT DISTRIBUTOR (K.)
367	6	THEREE SIMPLE DOUBLE-EFFECT DISTRIBUTOR (K.)
368	1	TWO SIMPLE DOUBLE EFFECT DISTRIBUTOR (K.)
368	2	TWO SIMPLE DOUBLE EFFECT DISTRIBUTOR (K.)
368	3	TWO SIMPLE DOUBLE EFFECT DISTRIBUTOR (K.)
368	4	TWO SIMPLE DOUBLE EFFECT DISTRIBUTOR (K.)
368	5	TWO SIMPLE DOUBLE EFFECT DISTRIBUTOR (K.)
368	6	TWO SIMPLE DOUBLE EFFECT DISTRIBUTOR (K.)
375	1	S-D EFFECT DISTRIB. FOR TRACTOR WITH ONE DISTRIB. (KONTAK)
375	2	S/D EFFECT DISTRIB. FOR TRACTOR WITH 2 DISTRIB. KONTAK
375	3	S-D EFFECT DISTRIB. FOR TRACTOR WITH ONE DISTRIB. (KONTAK)
376	1	S/D EFFECT DISTRIB. FOR TRACTOR WITH 2 DISTRIB. KONTAK
376	2	S/D EFFECT DISTRIB. FOR TRACTOR WITH 2 DISTRIB. KONTAK
376	3	S/D EFFECT DISTRIB. FOR TRACTOR WITH 2 DISTRIB. KONTAK
379	1	DOUBLE ACTING DISTRIB. WITH FLOAT FOR TRACTOR WITH 2 DISTRIB. KONTAK
379	2	DOUBLE ACTING DISTRIB. WITH FLOAT FOR TRACTOR WITH 2 DISTRIB. KONTAK
380	1	SINGLE/DOUBLE EFFECT DISTRIB. AND DISTRIB. WITH FLOAT FOR TRACTOR WITH ONE DISTRIB. (KONTAK)
380	2	SINGLE/DOUBLE EFFECT DISTRIB. AND DISTRIB. WITH FLOAT FOR TRACTOR WITH ONE DISTRIB. (KONTAK)
380	3	SINGLE/DOUBLE EFFECT DISTRIB. AND DISTRIB. WITH FLOAT FOR TRACTOR WITH ONE DISTRIB. (KONTAK)
380	4	SINGLE/DOUBLE EFFECT DISTRIB. AND DISTRIB. WITH FLOAT FOR TRACTOR WITH ONE DISTRIB. (KONTAK)
537		SHOES MM 400
541		STREET PLATES FOR SHOES 310 MM
542		STREET PLATES FOR SHOES 360 MM
543		STREET PLATES FOR SHOES 400 MM
731-732-733		(ADDITIONAL PRESS. INTAKE) RAPID COUPLING Q = 1-2-4
757		YELLOW HEADLAMPS (HEADLIGHTS)
770	1	LIGHTING COMPONENTS (SEALED-BEAM)
770	2	LIGHTING COMPONENTS (SEALED-BEAM)
805	1	POWER TAKE-OFF 540/1000 G.
805	2	POWER TAKE-OFF 540/1000 G.

TABLE OF CONTENTS

819	1	WTO HYDRAULIC LIFT
819	2	WTO HYDRAULIC LIFT
819	3	WTO HYDRAULIC LIFT
819	4	WTO HYDRAULIC LIFT
876		SAFETY FRAME
890		REDUCED CROSSRAIL DRAWBAR
895		SUPPORT FOR TRAILER BRAKE CONTROL LEVER
899		SUPPLEMENTARY TOWING DEVICE

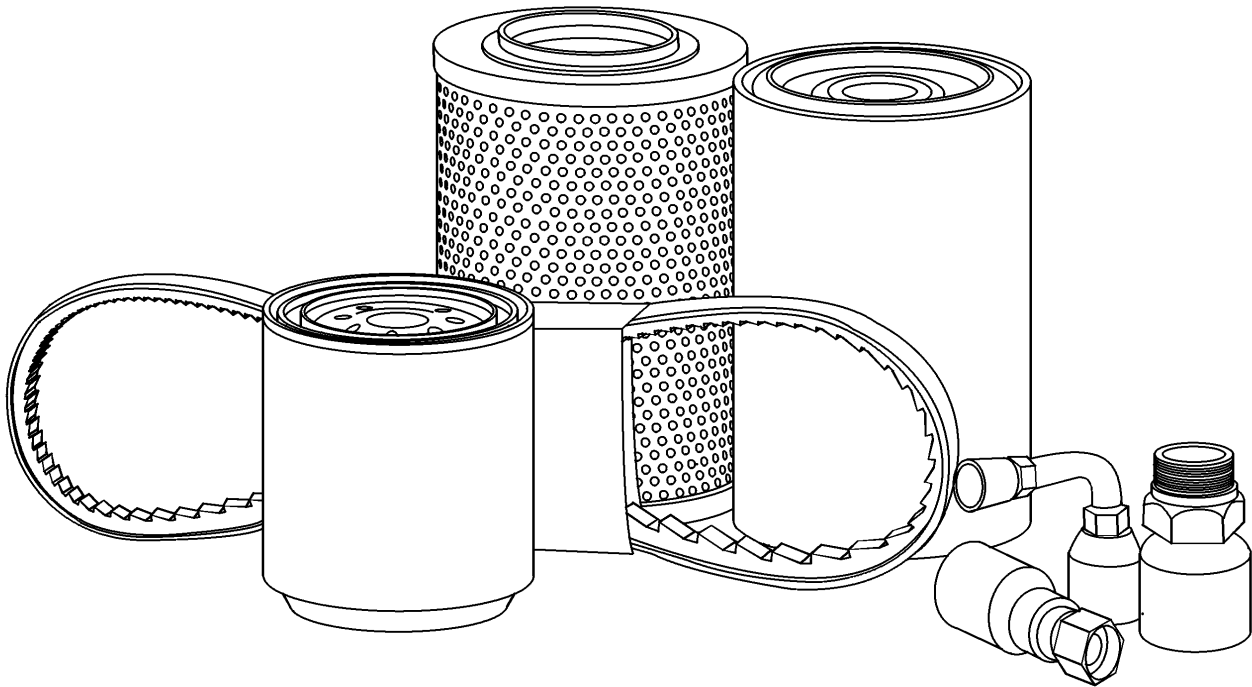
SECTION INDEX

GENERAL

05.100.03

FILTER & CAPACITIES, 70-65

FILTER & CAPACITIES, 70-65



FILTER & CAPACITIES, 70-65

REF FN	PART NUMBER	YR/SN	QTY DESCRIPTION
1	84221215		1 ENGINE OIL FILTER Spin On
2	1909139		1 AIR FILTER Primary
3	1909138		1 ELEMENT Primary
4	1909130		1 HYDRAULIC OIL FILTER Spin On
5	1909100		2 FUEL FILTER Spin On

70-65

**Thanks very much for your reading,
Want to get more information,
Please click here, Then get the complete
manual**

JustClickHere 

NOTE:

**If there is no response to click on the link above,
please download the PDF document first, and then
click on it.**

**Have any questions please write to me:
admin@servicemanualperfect.com**